

BASE STATION

Maldol
ANTENNA

HS-FOX727

DUAL BAND YAGI ANTENNA

***** INSTRUCTION MANUAL *****

NOTE PLEASE READ ALL INSTRUCTIONS BEFORE ASSEMBLY

FEATURE

- (1) Dual band for 2m/70cm.
- (2) Independent element type ensures a nice gain and performance in comparison with Mono band.
- (3) Light weight, compact and easy to install and re-assemble.

SPECIFICATIONS

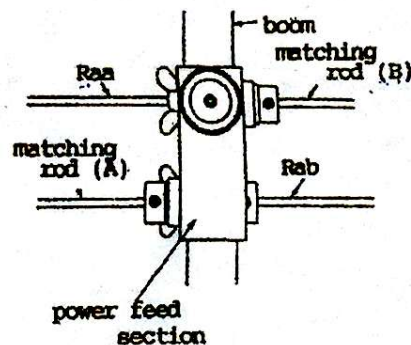
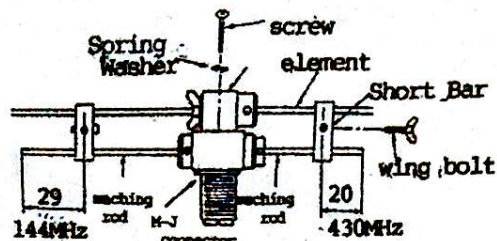
| | |
|---------------|--|
| Type | 3-Elements YAGI (143MHz) 5-Elements YAGI (435MHz) |
| Frequency | 144-146 / 430-440MHz |
| Gain | 9.5dBi / 11.15dBi |
| Power input | 50 watts (FM) max. |
| Impedance | 50 Ω |
| FB ratio | more than 12dB |
| Boom length | 1,130 mm |
| Connector | M - J |
| Suitable Mast | 25 - 43 mm diameter |
| Weight | 850 g |

ASSEMBLING

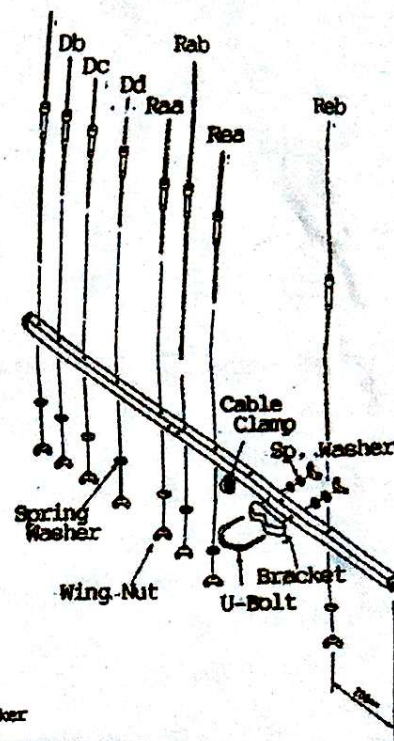
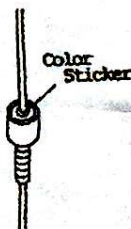
- (1) Identify and arrange the 8-elements and the power feed unit of antenna see color chart.
- (2) Using flat washer and wing nut join each element and the power feed unit (with Raa and Rab) according to color code to boom.
- (3) Insert matching rod A & B into power feed unit.
A (longer bar) should be in the hole farthest from the SO-239 connector. B (shorter bar) should be in the hole closest to SO-239 connector. Using hex. wrench provided, tighten match rods in power feed unit with set screws. Attach shorting bars per diagram.
- (4) Refer to drawing and attach cable clamp on boom forward from location of U-bolt bracket and on the same side as the power feed unit.
- (5) Mount antenna on mast in either horizontal or vertically (offset if necessary when using a metal mast - see diagram)
- (6) Attach coax with PL-259 connector to power feed unit and insert coax into clamp. Use electrical tape or wire ties to secure coax along boom.

VSWR ADJUSTMENT

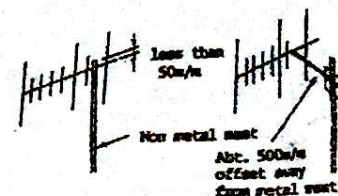
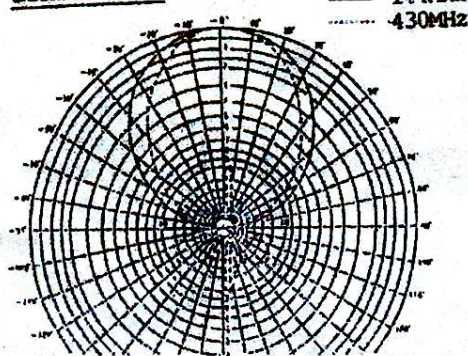
- (1) Adjust VSWR at center frequency of each band. Move shorting bar further from connector to raise center frequency where VSWR is optimum.
- (2) Be sure wing nut assembly is tightened on the shorting bar.



| ELEMENTS COLOR CHART | |
|----------------------|---------------|
| Element (Da) | 932mm - RED |
| Element (Db) | 310 - BLUE |
| Element (Dc) | 312 - YELLOW |
| Element (Dd) | 316 - WHITE |
| Element (Raa) | 330 - BLACK |
| Element (Rab) | 952 - GREEN |
| Element (Rea) | 380 - ORANGE |
| Element (Reb) | 1,044 - BROWN |



Beam Pattern



Hokushin Industry Co., Ltd.,
Hanamigawa-ku, Chiba City,
Chiba-Pref., Japan.